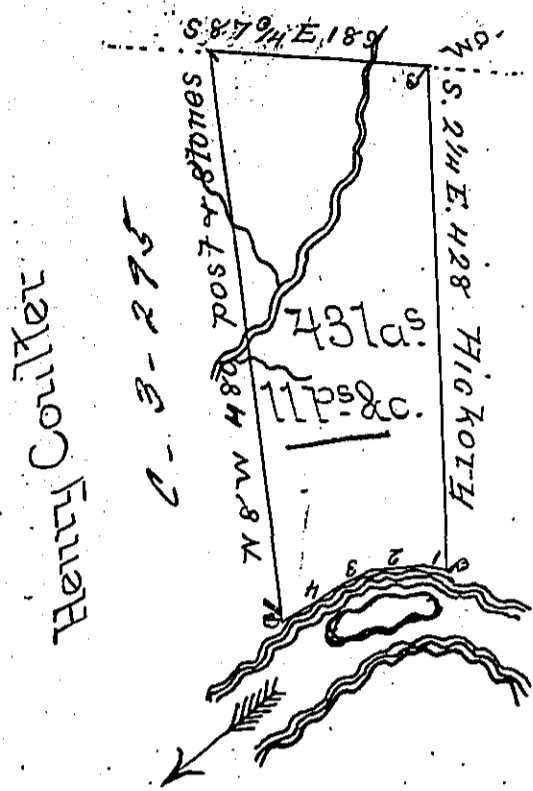


Ja<sup>s</sup> Adams' Heirs



George Power's Heirs

Courses & distances down River from Hickory

- No 1 N. 52 W. 23
- 2 S. 55 W. 44
- 3 S. 70 W. 25
- 4 S. 57 W. 55 to w.o.

Draft of a tract of land situate in Sugar Creek Township, Venango County, North and West of and adjoining the Allegheny River, and on the Two Mile Run & surveyed 21<sup>st</sup> October 1851, for Charles Shirk, on improvement and settlement of Robert Huston and others &  
 Rich<sup>d</sup> Erwin, Survey

I accept and approve of the above Survey - Given under my hand this 3<sup>rd</sup> day of November 1851 &

Matthew Riddle J.S.

Wm J. Porter Brawley Esq. }  
 Surveyor General of Pa. }

IN TESTIMONY that the above is a copy of the original remaining on file in the Department of Internal Affairs of Pennsylvania, made conformably to an Act of Assembly approved the 16th day of February, 1833, I have hereunto set my Hand and caused the Seal of said Department to be affixed at Harrisburg, this third day of January 1899.

*James W. Pitta*  
 Secretary of Internal Affairs.